



**UNIVERSITY OF
CALGARY**

Life Sciences Innovation Hub

**Building pathways
from discovery
to impact**

Activated by



Life Sciences Innovation Hub

The Life Sciences Innovation Hub (LSI Hub) supports research-intensive startup and growing companies to deliver commercially-viable products and services to market by providing access to infrastructure, equipment, expertise, and startup support services.



Community

Collaborate, exchange ideas, leverage best practices, and engage with the growing life sciences community in Calgary



Space

Wet/dry lab and office space with access to shared equipment in a collaborative environment



Programming and Support

Workshops, coaching, Intellectual Property Management, and access to sector-specific expert advisors

Focus areas

- Therapeutics: pre-clinical drug development
- Devices: research and development to small scale manufacturing
- Diagnostics: validation beyond discovery stage
- Research tools and platform technologies: development and validation

Features

- 127,000 sq ft located in University Research Park
- 35,000 sq ft wet and dry lab space
- Access to shared lab equipment (Plate readers, freezers, incubators, autoclaves, microscopes, and more)
- Trained technicians
- Shared or dedicated office and lab space
- Meeting room and event spaces

Programming

Operated by Innovate Calgary, LSI Hub delivers programming and support to members, such as:

- Access to the Expert Advisor program
- Mentorship and coaching
- Commercialization strategy development
- Access to the Integrated Management Platform to Accelerate Clinical Trials (IMPACT) Program
- Talent development/Fellowship program

Specialized programming for entrepreneurs and early-stage companies working in the LSI Hub has been made possible in part by funding from the Opportunity Calgary Investment Fund (OCIF) established by the City of Calgary.



Membership

Monthly and annual rates are available to best suit your company's needs.

Memberships are ideal for those who want:

- Access to shared lab and/or office space
- Access to LSI Hub's Expert Advisor program
- Access to preferred supplier rates and more.

Non-Resident: \$3000/annual/individual, company, or institute

Resident: \$500/month/individual (non-transferrable)

Parking: \$110/month/stall

Membership services/programs	Non-Resident	Resident
Access to Expert Advisor program (up to 100 hrs of consultancy services)	●	●
Preferred supplier rates for IP protection and incorporation/company formation costs	●	●
Access to specialized equipment at the University of Calgary ¹	●	●
Networking with the life sciences innovation community	●	●
Professional development training, workshops, seminars, and events	●	●
Meeting room and event space access	●	●
Company logo on display within the LSI Hub and its website	●	●
Corporate address	●	●
Shared wet and dry lab access		●
Shared desk		●
Shared access to molecular biology and rapid prototyping equipment ²		●
On-site BioBar to purchase laboratory consumables at a discounted rate		●
Access to glass washing, autoclaving, and some waste disposal services		●
Dedicated secure locker		●
Dedicated reagent and biological storage ¹		●

¹ Additional fees may apply
² Subject to availability

Only need a dedicated desk? Enquire at:

Isih.ca | Isih@innovatecalgary.com

Tenancy

Lease options are available to best suit your company's stage.

Tenancy is ideal for those who want:

- Private/dedicated office and/or lab space
- Key-card protection and lockable storage
- Access to LSI Hub's Expert Advisor program.

Lease rates

Dedicated desks: \$300-350/month

Dedicated lab space: \$44.95/sq ft/year

Lab sizes: 250 sq ft to 1500 sq ft

Parking: \$110/month/stall

Labs are private and key-card protected. Desks have lockable storage and filing cabinets, if required.

LSI Hub's programming/services for tenants

Tenants can access a LSI Hub membership that offers:

- Access to the Expert Advisor program (up to 100 hours of consultancy, valued at \$10,000)
- Onsite BioBar to purchase consumables such as plastic ware and reagents at discounted rates
- Access to meeting rooms and event space
- Access to professional development and training, workshops, seminars, events, and more.

Need access to the LSI Hub's shared lab equipment and engineering prototyping lab? Corporate memberships are available for a monthly rate (\$750/month/company (transferrable)).



Community

Collaborate, exchange ideas, leverage best practices, and engage with our growing life sciences community.

Events and Seminars

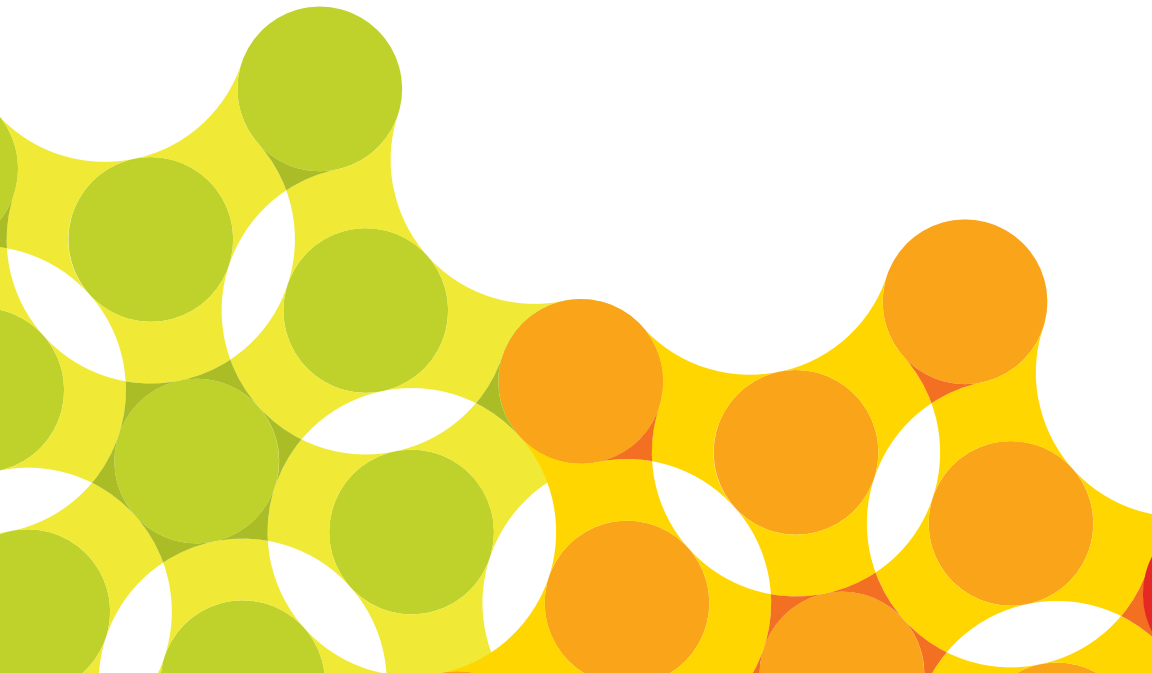
Each month we change our format, so no event is alike. Join us as we explore topics to keep you moving forward, inspire or just bring out your life science-based curiosity.

Host your Event

All members and tenants of the LSI Hub have access to meeting room and event space within our facility. Host your next meeting or event at the LSI Hub.

Increase Awareness

Leverage the LSI Hub to help drive awareness for your company's successes and milestones. Join us as a guest panelist for one of our monthly events or share your story with us and we will help disseminate it across our channels.



Shared Molecular Biology Equipment

Save your capital by accessing the LSI Hub's shared lab equipment. Every member has access to the following equipment:

- **QPCR** (Quantstudio 5)
- **Plate Reader** (Spectramax i3x w/ injectors and nanodrop module)
- **Centrifuge** (Avanti JXN26 Rotors: JA25.50 and JS5.3 with 250 ml and 500 ml adapters)
- **Imaging System** (Azure C600)
- **Ultrapure water** (GenPure xCAD Plus UV/UF)
- **Microcentrifuge** (Heraeus Fresco 21)
- **Tabletop Centrifuge** (Heraeus Megafuge 40 R Tissue Culture Package)
- **Mini Centrifuge** (mySPIN 12)
- **Freezer -80** (TSX Ultra)
- **Freezer -20** (TSX Ultra)
- **Fridge 4 degree** (TSX Ultra)
- **Flask Shaker** (MaxQ 4000)
- **Cell Culture Incubator** (Heraeus VIOS)
- **Stirring Hotplate** (Cimarec 7X7 HPS 100)
- **Vacuum Oven** (Vacuotherm)
- **4' Biosafety Cabinet** (REDISHIP Purifier Logic+)
- **6' Biosafety Cabinet** (REDISHIP Purifier Logic+)
- **Pipettes** (Finnpipette F2 GLP)
- **Lab Carts**
- **Rocker** (VWR 10127-876)
- **Vortex** (VWR)
- **Balance** (10 g capacity VWR 10204-998)
- **Analytical Balance** (VWR 10204-962)
- **pH Meter** (SevenCompact S210-Bio)
- **Agarose & Polyacrylamide Gel Equipment**
- **Liquid nitrogen dewar**
- **Sonicator** (50 Watt Ultrasonic Homogenizer w/5/32' Horn and 10-250 ml Horn)
- **Water Bath** (10 L)
- **Block Heater** (2.0 ml and 0.5 ml blocks)
- **Glassware**
- **Ice Maker**
- **Autoclaves** (Steris 250 LS)
- **Nano Drop and Cuvette Spectrophotometer** (Implen NP-80)
- **Dishwasher**
- **Zeiss Fluorescence Microscope Inverted** (Colour Camera)
- **Zeiss Fluorescence Microscope Upright** (Monochrome Camera)
- **Zeiss Inverted Brightfield Microscope**
- **Zeiss Dissecting Microscope** (Colour Camera)

Shared Engineering Prototyping Lab Equipment

Available Equipment

CNC Mill	HAAS Super Mini Mill, 10,000 RPM, 3 axis, wireless intuitive probing WIPS
Desktop CNC	Carbide 3D Nomad 883
Laser Cutter/Engraver	Trotec Speedy 360 FLEXX 80W CO2 & 30W Fiber 32"x 20" work area
3D Scanner	0.0025mm

3D Printers

AON-M2	<ul style="list-style-type: none"> • Industrial (FFF) printer, dual extrusion, ABS, PEKK, PEEK, ULTEM, • Build Volume - 454 x 454 x 640 mm (18 x 18 x 25 in) • Nozzle Temp - 470°C • Bed Temp - 200°C • Chamber Temp - 120°C
Makerbot Method	<ul style="list-style-type: none"> • Commercial (FFF) printer, dual extrusion, Makerbot PLA - Tough - PVA - PETG & 3rd party material • Build Volume - 152 x 190 x 196 mm (6.0 x 7.5 x 7.75 in) • Nozzle Temp - 250°C • Bed Temp - 40°C • Chamber Temp - 40°C
2x Creatbot F430	<ul style="list-style-type: none"> • Prosumer (FFF), dual extrusion, PEEK, ULTEM • Build Volume - 400 x 300 x 300mm (15.7 x 11.8 x 11.8 in) • Nozzle Temp - 420°C • Bed Temp - 110°C • Chamber Temp - 70°C
Formlabs Form 3	<ul style="list-style-type: none"> • Commercial (SLA), Automatic washing and hardening stations. • Resin-based. • Build Volume - 145 x 145 x 185 mm (5.7 x 5.7 x 7.3 in)
SLS (Model-TBA)	<ul style="list-style-type: none"> • Selective Laser Sintering (SLS). Powder recycling chamber and model post processing system.

Electronics suite

An electronics suite with everything needed for basic/intermediate electronics prototyping, equipment includes:

- **Weller Digital Solder Stations** (WT1012N) x2
- **Hakko Solder Station** (FX888D)
- **Duratool Hotair Rework station**
- **Multimeters** (Fluke 177)
- **B&K Power supplies** (06W1644 & 04P2069)
- **B&K Digital Oscilloscope** (BK2540C)
- **Arduino UNO R3, Raspberry PI Model B, breadboards, headers, jumper wires, PCB's and components**

General Tools

- **Sonic S9 fully stocked hand tool box**
- **King Canada scroll saw** (KC-163SSC)
- **King Canada Drill press** (KC-110N)
- **Porter Cable bench sander** (PCB420SA)
- **Powertech bandsaw** (BS900)
- **Singer sewing machine** (4452)
- **Dremel** (4000 Kit)



Isih.ca

Contact:

Isih@innovatecalgary.com

403.270.7027

